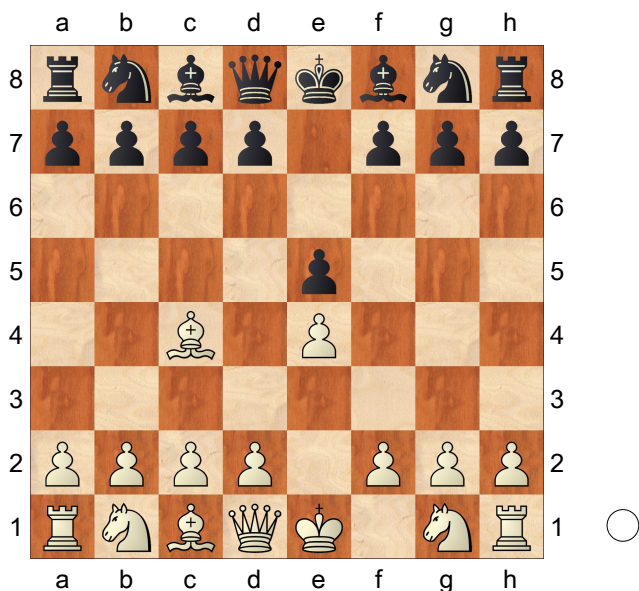


Middlegames Camp I – Attacks on f7: Int
[FM Peter Giannatos]



This is a basic example of the early attack on the f7 pawn. You may notice that only the king guards this pawn at the start of a chess game. This is a pawn you always have to look out after and is a pawn that is rarely ever moved prior to castling. In the Openings 1 Camp we discussed tricks and traps against the f-pawn. Here we are going to look at how the f-pawn can be weak in the middlegame even after castling!

C53

□ **Theodor von Scheve**

■ **Richard Teichmann**

Berlin Berlin GER (9)

16.06.2020

[FM Peter Giannatos]

1.e4 e5 2.Nf3 Nc6 3.Bc4 Bc5

The Italian Game. **4.c3 Qe7 5.0-0**

[5.d4 exd4]

5...d6 6.d4 exd4

[6...Bb6 A good move. It would be impulsive to take the pawn on d4, but this way black keeps his e-pawn in the center. 7.a4 a6 Creating a necessary cubby for the bishop. 8.a5 Ba7 9.h3 Nf6 10.dxe5 Notice how this move allows the bishop on a7 free to pin the f-pawn. Nxe5 11.Nxe5 Qxe5 Eyeing the g3 square. Wait, no it's not, there's a pawn there. Just watch :-)

12.Nd2
A) 12...Bxh3! Strike 1 – Ouch! Open up the king.

A1) 13.gxh3 Qg3+! The whole point. Now it all becomes clear. The bishop is pinning the f-pawn and therefore white can not take the queen. The game is over once black is able to get the knight into the game. 14.Kh1 Qxh3+ And another one.....with check 15.Kg1

A1a) 15...Ng4 The straw that broke von Scheve's back. The knight comes in with great pressure against the f-pawn but there's also a checkmate threat on h2! TIP: If you can bring more pieces into an attack, do it!

A1a1) 16.Nf3 Qg3+ I'm back! This also adds another attacker to the f-pawn. 17.Kh1

A1a11) 17...Bxf2 0-1 White resigns. White resigned in view of Qh3# coming. The bishop can not be captured since... Homework: For years this position was considered a lost position for white. Turns out there is a way for white to save the game. A

good lesson on why you should try everything you can before resigning! 18.Qe2 (18.Rxf2 Nxf2#; 18.Ng5 Qh2#) 18...Qh3+ 19.Nh2 Qxh2#;

A1a12) 17...Nxf2+ 18.Rxf2 Bxf2 19.Bf1;

A1a2) 16.Re1 Bxf2#;

A1b) 15...Qg3+ 16.Kh1 Qh3+ (16...Bxf2) 17.Kg1 Qg3+ 18.Kh1 Qh3+;

A2) 13.Nf3 Qg3 14.Be3 Qxg2#;

B) 12...Qg3 13.Qf3]

7.cxd4 Bb6 8.Nc3

0-1

C45

Yo Momma

Henry Edward Bird

ENG

16.06.2020

[FM Peter Giannatos]

1.e4 e5 2.Nf3 Nc6 3.d4 exd4 4.Nxd4

The Scotch Game. 4...Qh4 This is a wild line for black. He goes after white's pawn on e4 and pressure against the f-pawn. Don't try this at home, unless you're playing your parents :-D 5.Nb5 Threatening a fork, but Bird goes for checkmate!

[5.Nc3 Bb4 (5...Bc5)]

5...Bc5! Developing with tempo. There's no better way! 6.Qf3 Guarding the checkmate threat.

[6.Nxc7+ Kd8 Loses for white, since checkmate is threatened and so is his knight. 7.Nxa8 (7.Qf3 Kxc7)

7...Qxf2#]

6...Nf6 Black allows the fork to get all pieces into the attack. 7.Nxc7+ Kd8

8.Nxa8 If you say A you must say b 8...Re8 Black gets all pieces into the attack. 9.Bd3 Nxe4 10.0-0 Nxf2

Destruction of the f-pawn and kings shield. 11.Rxf2 Re1+ 12.Bf1 Nd4 Bringing the last piece into the game, there are way too many threats! The black knights has eyes on the queen and the e2 check. 13.Qxf7 Ne2+ 14.Kh1 Rxf1+ If you can do everything with check, then do it!

[14...Ng3+ 15.Kg1 Rxf1#]

15.Rxf1 Ng3# 0-1 Black wins by checkmate. A reminder why it's good to have your f-pawn, even in the middlegame.

0-1

E12

Mark Taimanov

Predrag Ostojic

Reykjavik Reykjavik ISL

14.06.2020

[FM Peter Giannatos]

1.d4 Nf6 2.c4 e6 3.Nf3 b6

The Queens Indian Defence. 4.Nc3 Bb7

To prevent e4. 5.e3 Be7 6.Bd3 d5

7.0-0 0-0 8.b3 c5 9.Bb2 Nbd7

10.Qe2 cxd4 11.exd4 g6 12.Rad1

Nh5 13.Qe3 Keeping an eye out on the f4 square. That knight on the rim had intentions. 13...Rc8 14.Ne2 Re8

The first move which should grab your attention. Look at that juicy little f-pawn.

15.Ne5 dxc4

[15...Nxe5 16.dxe5]

16.Bxc4 Now we have to start paying attention to possible threats. What do we notice? 1.) Blacks rook is not protecting the f7 pawn. Once again, only the king is protecting that pawn. 2.)

There is a pawn on e6 which stops the direct attack. 3.) The queen on e3 is attacking, through the knight, the e6 pawn. 4.) White has the option of sacrificing the knight on f7 to destroy the pawn chain. **16...Nhf6 17.Nf4**

White had an even stronger move here!

[17.Nxf7! Kxf7 18.Qxe6+ Kg7 19.Nf4 Rf8 20.Qh3! A beautiful clearance move. That e6 square has never looked so good!]

17...Bf8 18.Nxf7! Ouchtown! The knight sacrifice opens the diagonal for the bishop and the e-file for the queen. The e6 pawn is very weak! **18...Kxf7**

What else? If you don't take you lose,. If you take, you still lose, but at least you're up a knight :-)

19.Nxe6

The correct piece to capture with. Black can not escape the discovered attacks. On top of that, white is threatening black's queen with check!

[19.Bxe6+ Kg7]

19...Rxe6 20.Qxe6+ Kg7 21.Qf7+ Kh8

[21...Kh6 22.Bc1+ g5 23.h4

Attacking the pinned piece and also totally smashing the king. Mate will come soon.]

22.Rfe1 Black can hardly move without losing something. All of whites pieces are placed very well. **22...b5 23.Be6 Rc7 24.d5** Unleashing the power of the bishop on b2 while closing the bishop on b7 down completely. **24...Ne5**

25.Qxf6+!! 1-0 Black resigns. The final blow. If black plays...

[25.Qg8+ Nxc8 26.Bxe5+ Rg7]

25...Qxf6 26.Bxe5 Wins back the Queen. On top of that white would be up the exchange and two pawns. The position is hopeless for black. Reminder: The "exchange" is the

difference between a rook and a minor piece. **26...Bg7 27.Bxf6 Bxf6 1-0**

C90

□ **Richard Teichmann**

■ **Carl Schlechter**

Karlsbad Karlsbad (Karlovy Vary) AUH (18)
[FM Peter Giannatos]

1.e4 e5 2.Nf3 Nc6 3.Bb5

The Ruy Lopez opening, also known as the Spanish Game. This opening seems a bit boring to most amateurs but in fact has been a favorite of the world's top players for over 100 years. **3...a6 4.Ba4**

[4.Bxc6 dxc6 5.Nxe5 Does not win a pawn since black has... Qd4

Black will get the pawn on e4 back.]

4...Nf6 5.0-0 Be7 6.Re1 b5 7.Bb3 d6 8.c3 0-0 9.d3 Na5 10.Bc2

Tucking the bishop away for now. You're making fun of this bishop now, but you just wait! **10...c5 11.Nbd2 Qc7 12.Nf1 Nc6 13.Ne3 Bb7 14.Nf5** Knife f5 – Kotronias. Knights on the f5 square posted around the king can be extremely dangerous, this is no

exception. **14...Rfe8 15.Bg5 Nd7 16.Bb3** "Say hello to my little friend!"

Remember at some point you were making fun of that bishop. Now there is a direct assault on the f-pawn. Notice the rook is not guarding. **16...Nf8**

17.Bd5 Threatening to win a piece with Bxc6 since the bishop on e7 would be underprotected. **17...Ng6**

[17...Bxg5 18.Nxc6]

18.Bxe7 Ngxe7

[18...Ncxe7 Doesn't help much either.

19.Bxb7 Qxb7 20.Nxd6 Loses a pawn

and the exchange.]

19.Bxf7+!! Is this that surprising to you?
"Another day, another doller"

[19.Ng5 Nxd5]

19...Kxf7 20.Ng5+ Kf8

[20...Kg8

A) 21.Qh5 The knights and queen are dancing around the poor black king. The end is near.

A1) 21...Nxf5 22.Qxh7+ Kf8 23.Qxf5+

A1a) 23...Kg8 24.Qg6!

I really like this move since it stops the defensive move g6, for example: (24.Re3 g6 25.Qxg6+ Qg7 This is still good for white since black's king is getting completely hammered. But why allow the queen over to the defence? 26.Qh5) 24...Qd7 25.Re3 1-0 Black resigns. The rook is coming to help the queen and knight. The black king is totally surrounded. For example: Nd8 26.Rf3 With Qh7# coming, black will have to give away all of his pieces to escape.;

A1b) 23...Ke7

A1b1) 24.Qf7+ Kd8 25.Ne6+ Rxe6;

A1b2) 24.Qe6+ Kf8 (24...Kd8 25.Nf7+) 25.Nh7#;

A1b3) 24.Qf8+;

A2) 21...h6 Is even worse.

22.Qf7+ Kh8 23.Qxg7#;

B) 21.Qb3+ c4 22.dxc4 Na5]

21.Ne6+

1-0

C87

□ **Efim Geller**

■ **Paul Keres**

USSR Championship (10)

14.06.2020

[FM Peter Giannatos]

1.e4 e5 2.Nf3 Nc6 3.Bb5 Once again, the Ruy Lopez. **3...a6 4.Ba4 Nf6 5.0-0 Be7 6.Re1 d6 7.c3** The idea of placing the pawn on c3 is to prepare to take the center with d4. **7...0-0 8.d4 Nd7 9.Be3 Bf6 10.Nbd2 Re8 11.d5 Ne7 12.b4** Gaining space. **12...g6 13.c4**

More space! **13...c6 14.Rc1 Bg7**

15.c5! Geller is willing to sacrifice a pawn in the center to break open the position for his better developed pieces.

15...dxc5 16.bxc5 cxd5 17.exd5

Nxd5 OK, so Geller "lost" a pawn. What does he have for the pawn? 1.) An open center for whites bishops. 2.) Generally, opening the game is smart when you have more pieces in the game. 3.) All of white's pieces are active, while 4 of black's are still on the back rank. 4.) Don't forget that unprotected f-pawn. It's important!

18.Bg5 Keeping the bishop with tempo. **18...Ne7 19.Ne4**

The knight has eyes on d6 and f6. The bishop is pinning the knight on e7. Black is totally tied down. **19...h6 20.Nd6**

Pay attention to the weak f7 square. Do you think white really wants that passive rook on e8? **20...hxc5** Free Bishop!

21.Nxf7!! OR NOT! 21...Qa5

The only move to keep the game going since taking the knight loses miserably.

[21...Kxf7 22.Nxg5+ Kg8 (22...Kf8 23.Ne6+ wins the queen with an ongoing attack.) 23.Qb3+ Kh8 (23...Nd5 24.Qxd5+ Kh8 25.Nf7+ wins the queen with an ongoing

attack.) 24.Qh3+ Kg8 25.Bb3+ Kf8
(25...Nd5 26.Bxd5+ Re6 27.Qxe6+
Kh8 28.Qh3+ welcome back! Bh6
29.Qxh6#) 26.Nh7#]

22.N7xg5 clearing the diagonal for the
bishop and the queen. There's also a
threat to the knight on d7 now that
white's protected his. **22...Rf8**

Why not protect the knight?

[22...Rd8 protecting the knight but
allowing the queen onto the diagonal
with nothing guarding the f7 square.
23.Qb3+ Kh8 24.Nf7+ Kh7 25.N3g5+
Kg8 26.Nh6+ Kh8 27.Qg8+!!
Beautiful smothered checkmate in the
making! Rxc8 (27...Nxc8 28.Nhf7#
Also smothered checkmate.) 28.Nhf7#
smothered checkmate.]

23.Bxd7 Qxa2

[23...Bxd7 24.Qxd7]

24.Re2 A lot of moves win here. White
has a permanent attack on black's king.
24...Qa3 25.Re3 Qb4 26.Bxc8 Raxc8
27.Qd7 Nf5 28.Qe6+ Black wishes he
still had his f-pawn! **28...Kh8 29.Qxg6**
1-0 Black resigns. Unstoppable mate on
h7.

1-0

A14

□ **Michal Vladimirovich Krasenko 2668**

■ **Hikaru Nakamura 2648**

Casino de Barcelona (2) 14.06.2020

[<https://lichess.org/@/Giannatos>]

1.Nf3 Nf6 2.c4 e6 3.g3 The English/
Reti Opening. Popular for people over 40
:-) **3...d5 4.Bg2** Sometimes this line is
known as the Neo-Catalan. **4...Be7**
5.0-0 0-0 6.b3 finally protecting the
pawn on c4 and preparing to develop.

6...a5 7.Nc3 Stopping a4. **7...c6 8.d4**
Nbd7 9.Qc2 b6 Preparing to improve
the placement of the light-squared
bishop. Good players always try to
improve their worst placed pieces. **10.e4**
Ba6 11.Nd2 c5 Fighting back for center
control. **12.exd5 cxd4 13.Nb5 exd5**
14.Nxd4 Rc8 The smoke has cleared,
and now white's pieces look a bit
misplace. The queen on c2 is causing
the c4 pawn to be pinned as is the rook
on f1. **15.Re1 b5** Attacking the pinned
piece. **16.Bb2 Re8 17.Qd1 bxc4**
18.bxc4 Qb6 19.Rb1 dxc4 20.Nc6
Rxc6 21.Bxf6 White's brilliant idea, or
so he thought! **21...Qxf2+!!** Word has it
that Nakamura muttered "Now who's
your daddy" after playing this move. OK,
maybe I made that up :-) **22.Kxf2 Bc5+**
23.Kf3

[23.Kf1 c3+ And the bishop on a6
joins the attack! 24.Re2 c2 25.Qxc2
Bxe2+ 26.Ke1 Bd3+ Black gets back
the queen and some!]

23...Rxf6+ 24.Kg4 Ne5+ 25.Kg5

[25.Rxe5 prolongs the game but does
not change the result. Here's a fun
line. Bc8+ 26.Rf5 Bxf5+ 27.Kh4
Rh6+ 28.Kg5 Bd7 29.Qe1 f6+
30.Kf4 g5+ 31.Kf3 g4+ 32.Kf4 Bd6+
33.Qe5 fxe5+]

25...Rg6+ 26.Kh5 f6 27.Rxe5 Rxe5+
28.Kh4 Bc8 0-1 White resigns. A great
move which stops the queen from
escaping. The best white has here is:
29.Bd5+ desperate but what else, at
least white clears the f3 square.
29...Rxd5 Rh6# is a threat. **30.g4 Rd3**
31.Qf3 Rxf3 32.Nxf3 Rxc4+ 33.Kh3
Rg5+ 34.Kh4 Bf2# This would have
concluded a beautiful king hunt by GM
Nakamura. The f-pawn can be weak for

white too!

0-1

