



CLASS ACTIVITY WORKBOOK

— BEGINNER LEVEL

Sample Pages

Beginner Level Workbook

FM Peter Giannatos

Sample Pages

2nd Edition

© 2022 Charlotte Chess Center

www.charlottechesscenter.org

No part of this publication may be reproduced or transmitted in any form without the prior written permission from the publisher.

Sample Pages

Student Name

Table of Contents

Board and Pieces

Defining the Chess Board	1
Introduction to the Chess Board	4
Board Setup	5
Pawn Movement	7
Bishop Movement	10
Rook Movement	12
Queen Movement	14
King Movement	16
Knight Movement	18

Board Visualization

Thinking Ahead	20
Piece Values	22
Capturing Free Pieces	24
Counting Attackers and Defenders	26
Creating Threats	28

Check, Checkmate, and Stalemate

Giving Check	30
Escaping Check	32
Identifying Check, Checkmate, Stalemate	34
Standard Checkmate in 1	37
Helper Checkmate in 1	40
Battery Checkmate in 1	43
Back Rank Checkmate in 1	46

Basic Tactics

Forks	48
Pins	50
Skewers.....	52

Special Rules

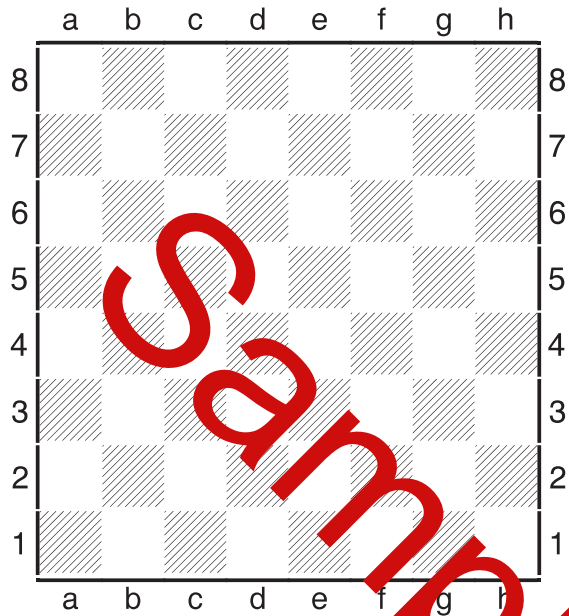
Castling	54
En Passant	58

Final Review

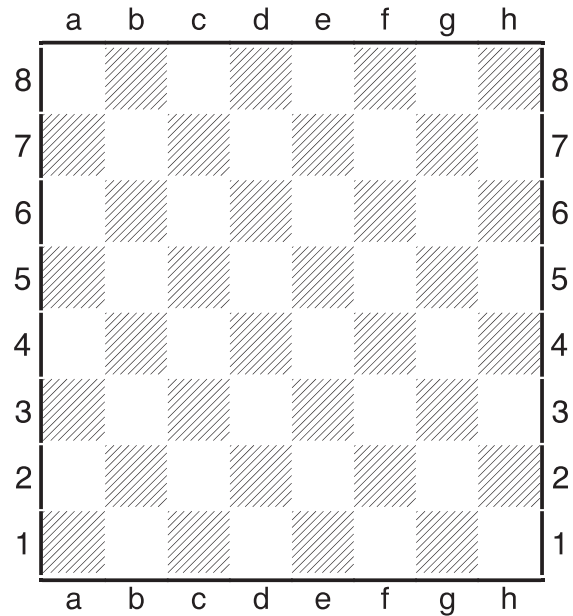
Checkmates in 1 Test	60
----------------------------	----

Beginner Level Workbook

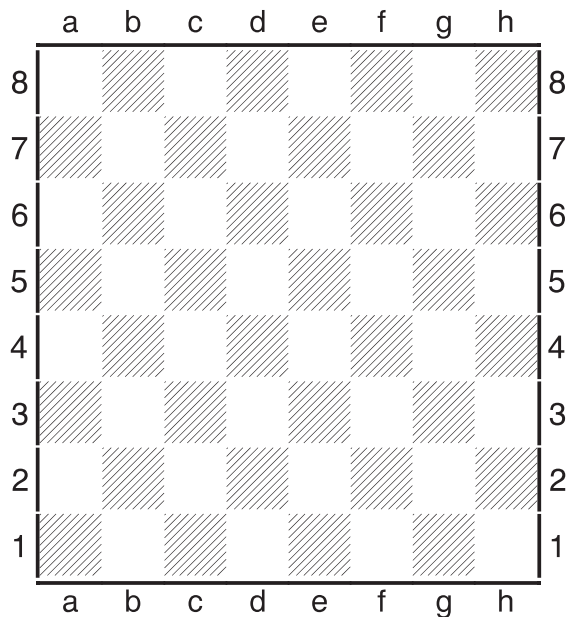
Activity: Defining the Chess Board



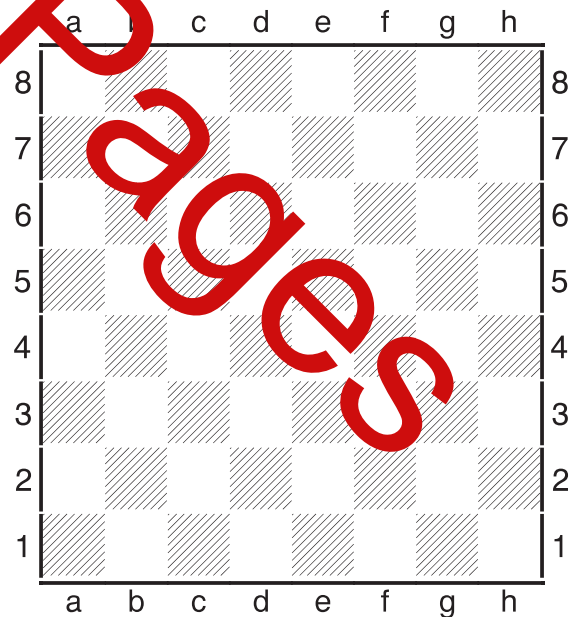
Mark an "x" on the light squares



Mark an "x" on the dark squares



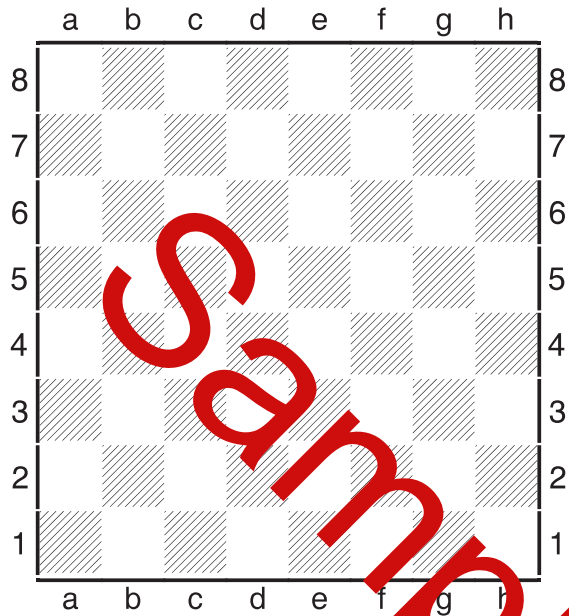
Draw a line on the c-file



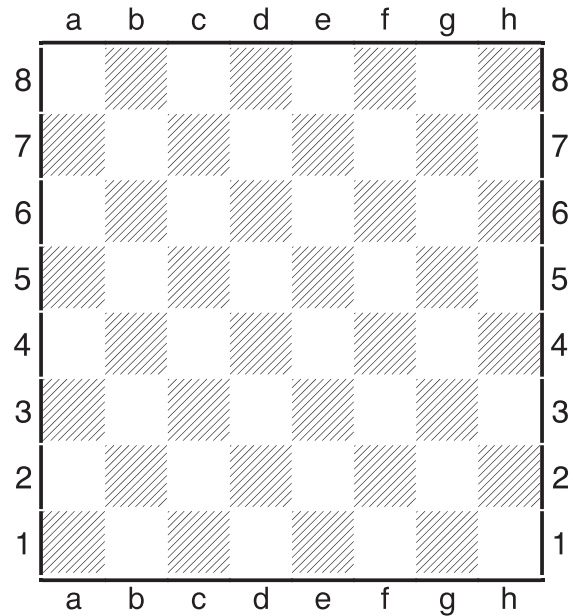
Draw a line on the h-file

Beginner Level Workbook

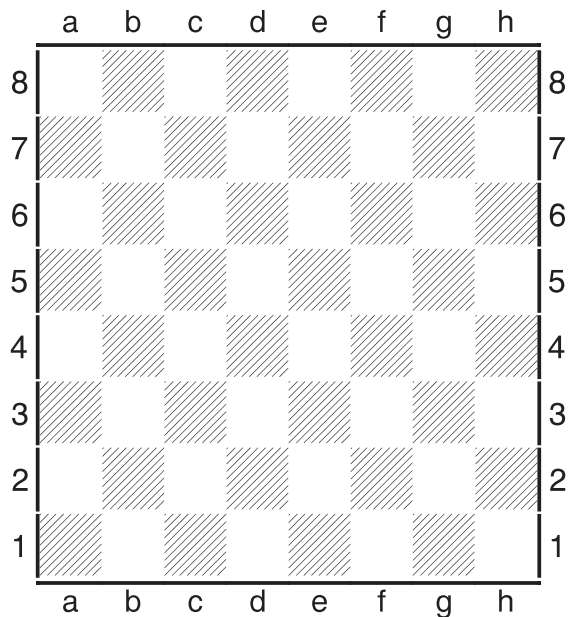
Activity: Defining the Chess Board



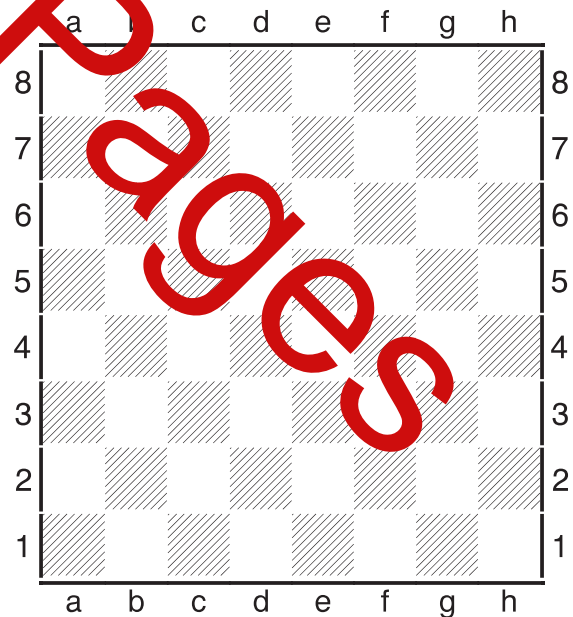
Draw a line on the 3rd rank



Draw a line on the 8th rank



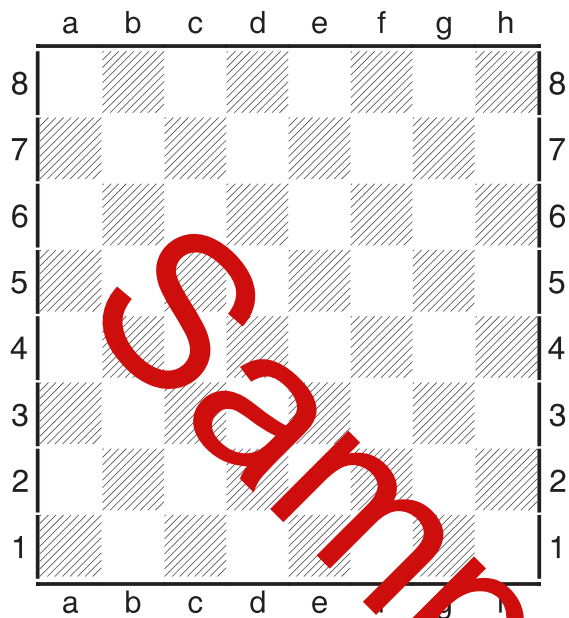
Draw a line on the a2-g8 diagonal



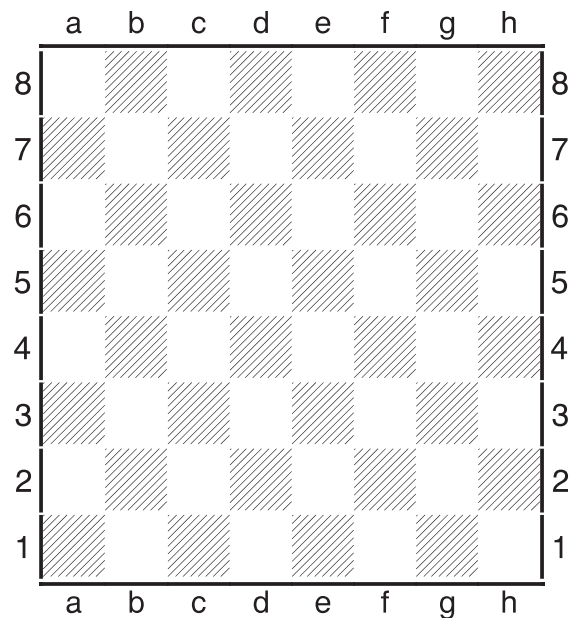
Draw a line on the h4-d8 diagonal

Beginner Level Workbook

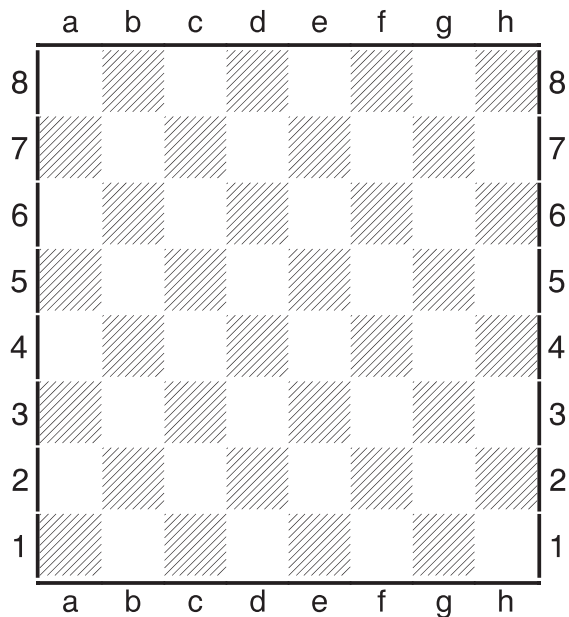
Activity: Defining the Chess Board



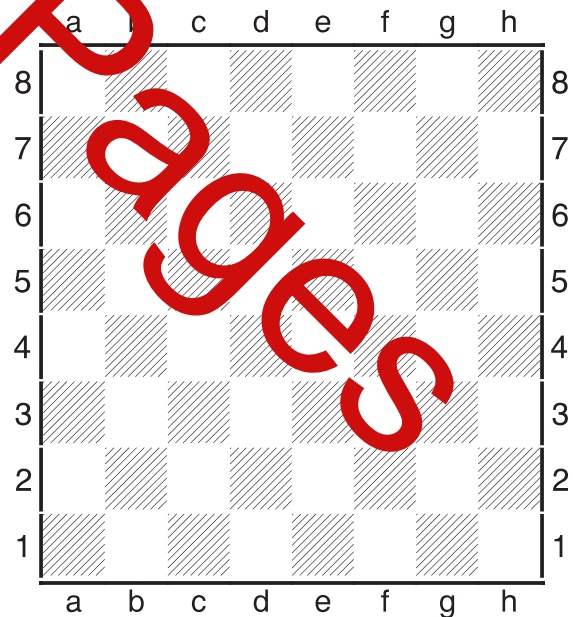
Mark an "x" on the following squares:
d2, b2, c3, d4, e4, f3, g2, h2



Mark an "x" on the following squares:
h8, g7, f6, e5, d6, c7, b8



Mark an "x" on the following squares:
c3, c4, c5, d5, e5, f5, e4, f3



Mark an "x" on the following squares:
b3, b7, h6, f4, g3, f1, a4

Beginner Level Workbook

Activity: Introduction to the Chess Pieces

Draw a line connecting the piece with the correct piece symbol

Pawn

Bishop

Knight

Rook

King

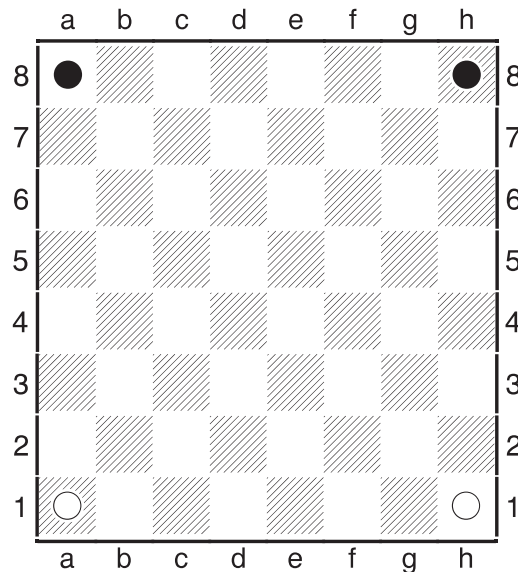
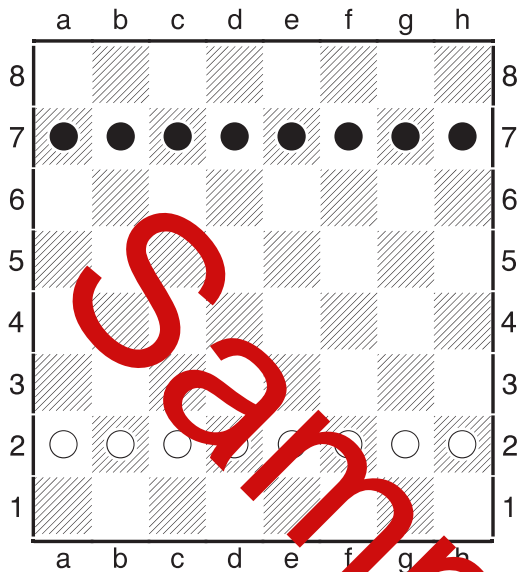
Queen

Sample Pages

Beginner Level Workbook

Activity: Board Setup

Circle the correct answer.

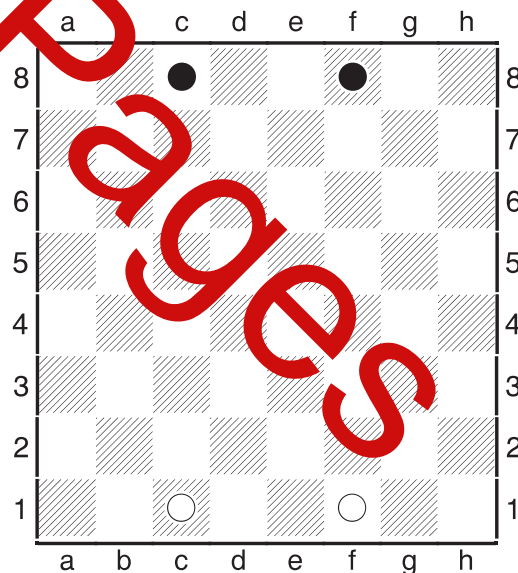
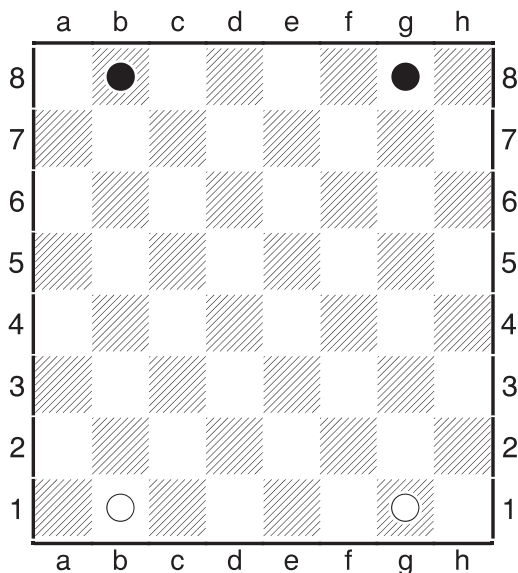


Which piece goes on the marked square?

- Pawn Knight Bishop
 Rook Queen King

Which piece goes on the marked squares?

- Pawn Knight Bishop
 Rook Queen King



Which piece goes on the marked squares?

- Pawn Knight Bishop
 Rook Queen King

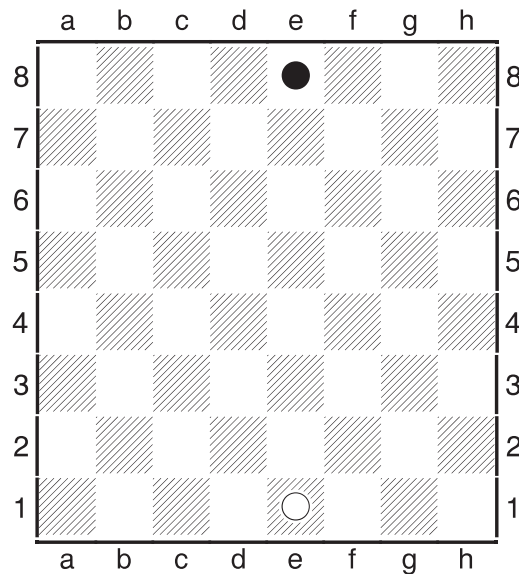
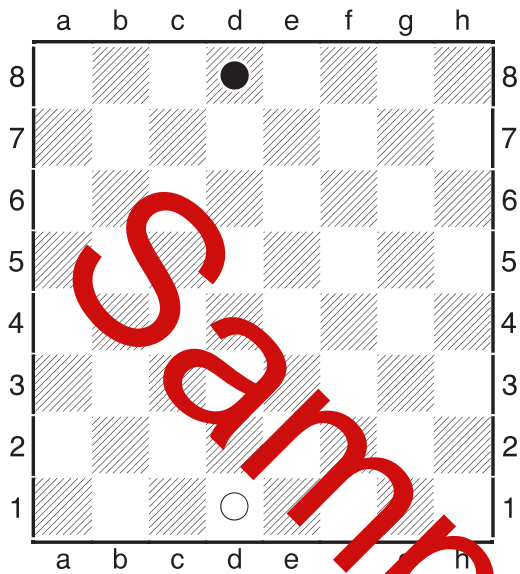
Which piece goes on the marked squares?

- Pawn Knight Bishop
 Rook Queen King

Beginner Level Workbook

Activity: Board Setup

Circle the correct answer.



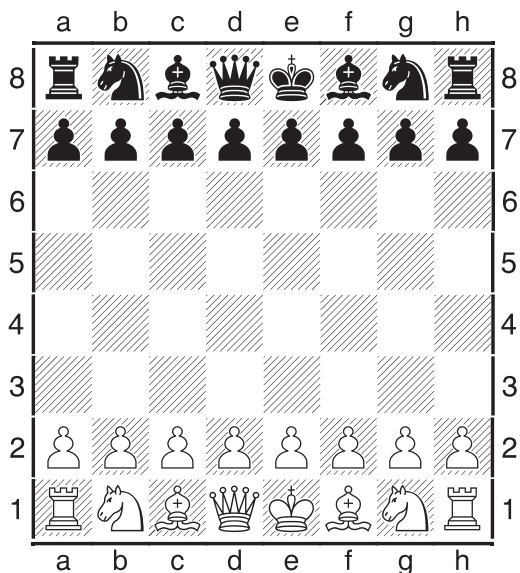
Which piece goes on the marked squares?

- Pawn ♙ ♚ Knight ♘ ♞ Bishop ♗ ♝
- Rook ♖ ♜ Queen ♑ ♓ King ♔ ♡

Which piece goes on the marked squares?

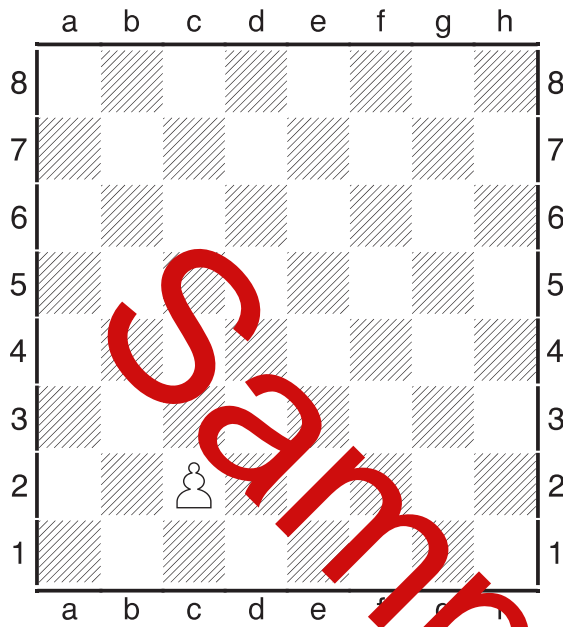
- Pawn ♙ ♚ Knight ♘ ♞ Bishop ♗ ♝
- Rook ♖ ♜ Queen ♑ ♓ King ♔ ♡

Circle the Correct Board Setup.

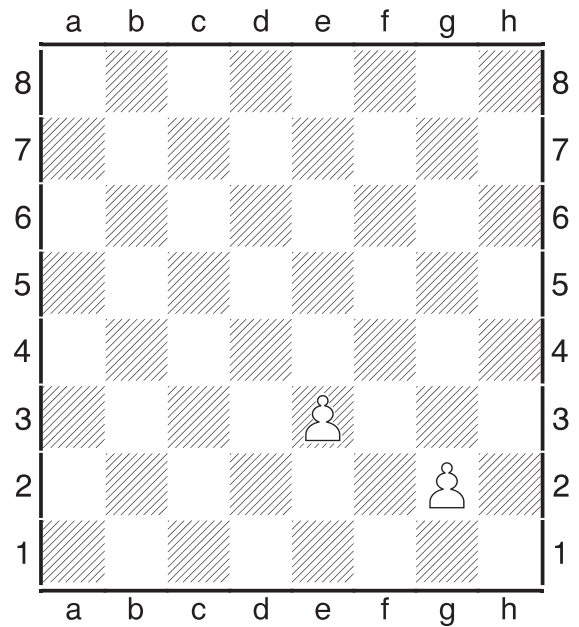


Beginner Level Workbook

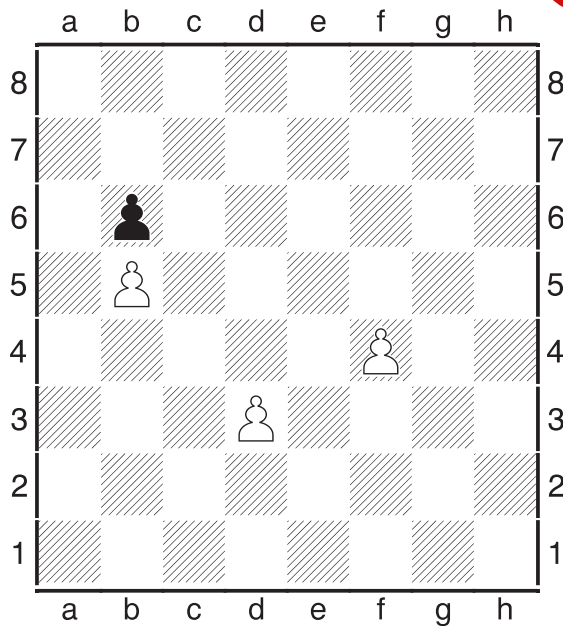
Activity: Pawn Movement



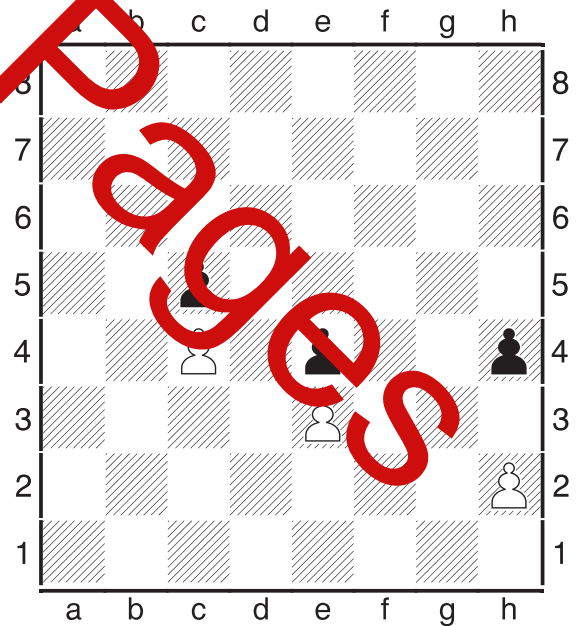
Circle every square the white pawn can move to



Circle every square the white pawns can move to



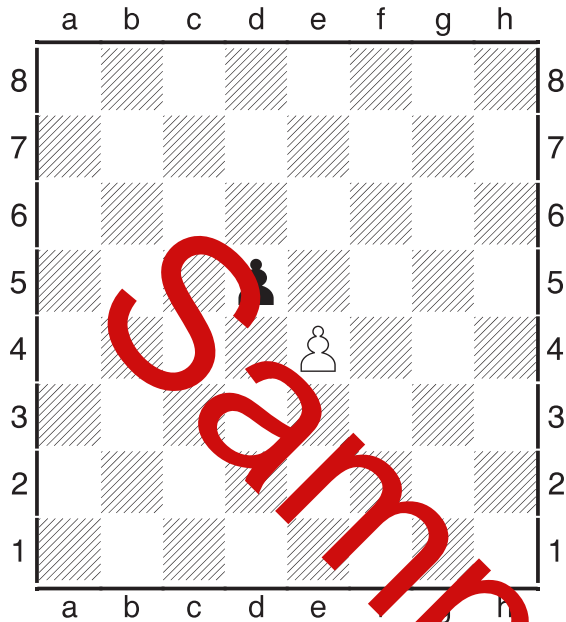
Circle every square the white pawns can move to



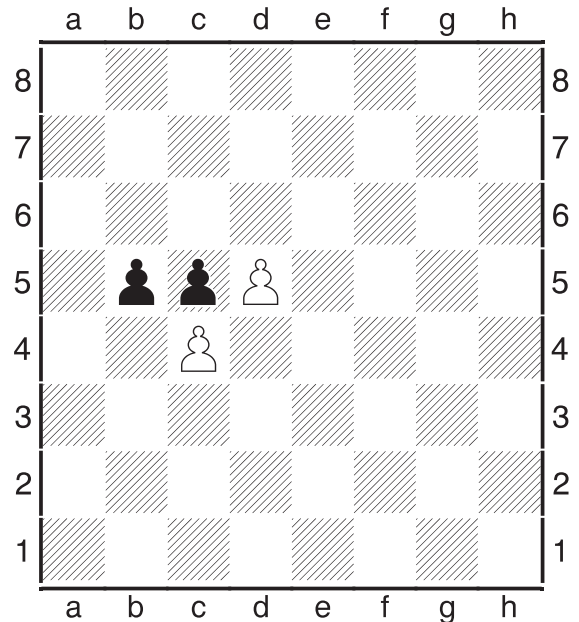
Circle every square the white pawns can move to

Beginner Level Workbook

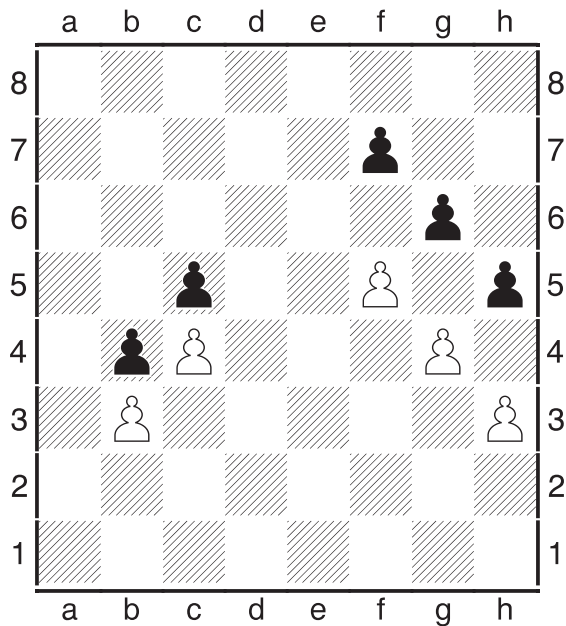
Activity: Pawn Movement



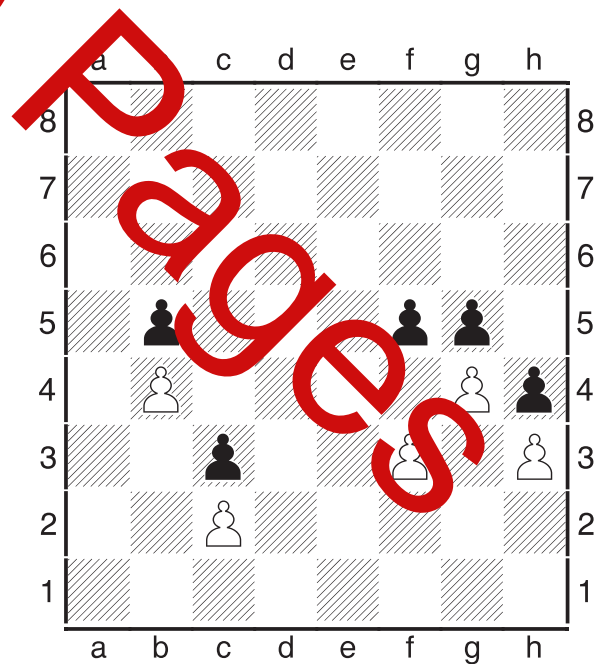
Mark an "x" every piece
White's pawn can capture



Mark an "x" every piece
White's pawn can capture



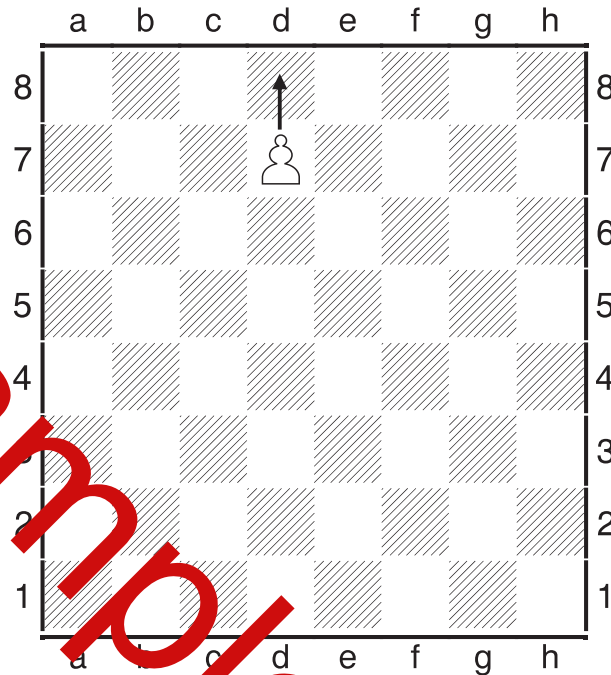
Mark an "x" on every piece
White's pawns can capture



Mark an "x" on every piece
White's pawns can capture

Beginner Level Workbook

Activity: Pawn Movement



What happens when a pawn reaches the other side?

Circle your answer

Becomes a different piece

The pawn moves backward

Circle all pieces a pawn can promote to:

Pawn



Knight



Bishop



Rook



Queen



King



Can you promote to a piece that has not yet been captured?

Circle your answer

Yes

No